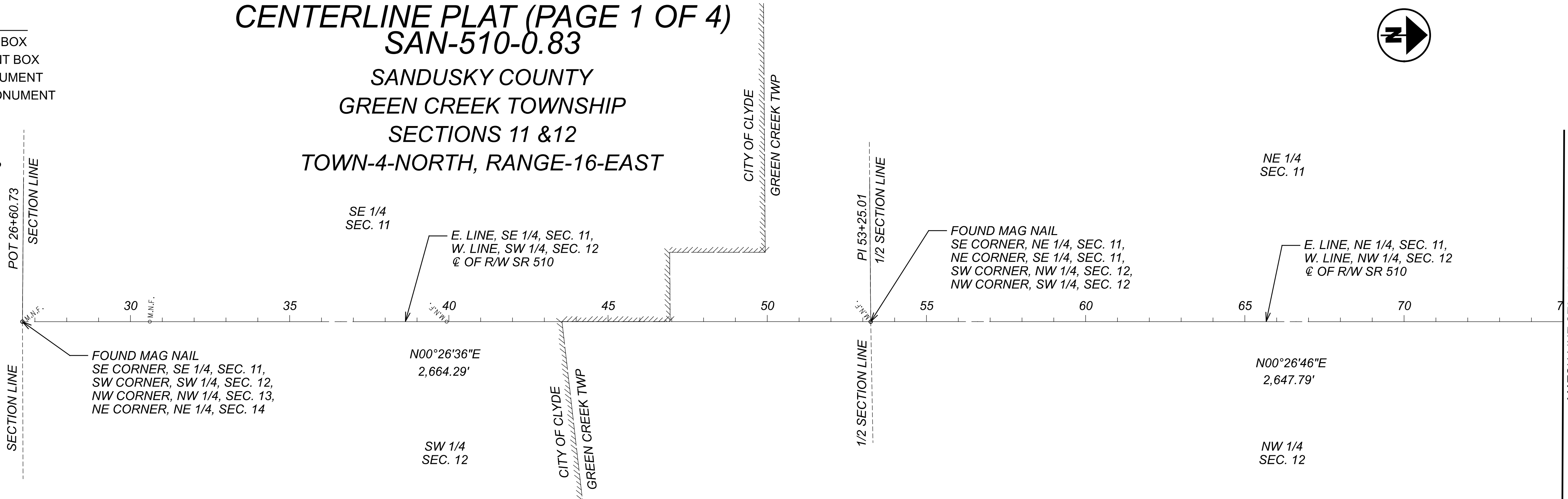


- MONUMENT LEGEND**
- EXISTING R/W MONUMENT BOX
 - PROPOSED R/W MONUMENT BOX
 - EXISTING CONCRETE MONUMENT
 - PROPOSED CONCRETE MONUMENT
 - RAILROAD SPIKE FOUND
 - RAILROAD SPIKE SET
 - IRON PIN FOUND
 - IRON PIN FOUND W/ ID CAP
 - IRON PIN SET W/ ID CAP
 - IRON PIPE FOUND
 - IRON PIPE SET
 - P.K. NAIL FOUND
 - P.K. NAIL SET
 - MAG NAIL FOUND



SAN-510-0.83							CL MONUMENTS			PID: 94332		
PROJECT GROUND COORDINATES - US SURVEY FEET								PROJECT CONTROL POINTS	STATE PLANE GRID COORDINATES			
PROJECT COORDINATES ARE RELATIVE TO STATE PLANE GRID COORDINATES									Horizontal Datum-NAD83 (2011), OHIO NORTH ZONE(3401)			
BY A GRID TO GROUND MULTIPLIER (1/CSF) OF: 1.00007238									Vertical Datum-NAVD88, Geoid 12A			
CL OF RW-SAN-510												
NAME	STATION	OFFSET (FT)	RT/LT	NORTH (FT)	EAST(FT)	ELEVATION(FT)	FEATURE	DESCRIPTION		NORTH (US FT)	EAST (US FT)	
124	26+60.73	CL		600621.60	1838201.33		MAG			600578.13	1838068.29	
200	30+60.71	0.01	LT	601021.57	1838204.41		MAG			600978.07	1838071.37	
123	39+92.88	0.01	LT	601953.71	1838211.62		MAG			601910.14	1838078.58	
109	53+25.01	CL		603285.80	1838221.94		MAG			603242.14	1838088.90	
108	79+72.80	CL		605933.51	1838242.55		MAG			605889.66	1838109.51	
107	106+14.76	CL		608575.34	1838269.25		MAG			608531.29	1838136.21	
10000	132+15.13	31	LT	611182.14	1838314.56		MAG			611137.91	1838181.51	
10001	132+61.39	62.48	RT	611183.04	1838418.86		MONBOX	W/ 1" IPIN		611138.81	1838285.80	
105	158+93.38	CL		613828.46	1838462.65		MAG			613784.03	1838329.59	
104	185+33.49	CL		616467.86	1838523.57		MAG			616423.25	1838390.50	
10002	211+84.78	CL		619118.62	1838576.62		RSPK			619073.81	1838443.56	
102	227+04.78	0.13	RT	620638.27	1838609.16		MAG			620593.35	1838476.10	
C1	238+35.06	CL		621768.30	1838633.14		CALC	CALCULATED SECTION CORNER		621723.30	1838500.07	
10004	239+40.54	0.13	RT	621873.75	1838635.31		MAG			621828.74	1838502.23	
C2	264+80.10	CL		624412.84	1838684.13		CALC	CALCULATED SECTION CORNER		624367.65	1838551.06	
101	291+25.13	CL		627057.55	1838725.90		MAG			627012.17	1838592.82	
100	344+32.39	CL		632363.79	1838829.87		RSPK			632318.02	1838696.79	
103	370+77.94	CL		635009.05	1838869.01		MAG			634963.09	1838735.92	

SURVEYING PARAMETERS:

THE FOLLOWING VERTICAL POSITIONING, AND HORIZONTAL POSITIONING PARAMETERS WERE USED FOR ALL SURVEYING ON THIS PROJECT:

- POSITIONING METHOD: ODOT VRS SURVEYS
- MONUMENT TYPE: TYPE A
- VERTICAL POSITIONING -
- ORTHOMETRIC HEIGHT DATUM: NAVD 88
- GEOID: 12A
- HORIZONTAL POSITIONING -
- REFERENCE FRAME: NAD83 (2011)
- ELLIPSOID: GRS 80
- COORDINATE SYSTEM: OHIO STATE PLANE, NORTH ZONE
- COMBINED SCALE FACTOR: 0.99992762
- ORIGIN OF COORDINATE SYSTEM: (0,0)
- USE THE POSITIONING METHODS AND MONUMENT TYPE USED IN THE ORIGINAL SURVEY TO RESTORE ALL MONUMENTS RELATED TO PRIMARY PROJECT CONTROL THAT ARE DAMAGED OR DESTROYED BY CONSTRUCTION ACTIVITIES. RESTORE THE DAMAGED OR DESTROYED MONUMENTS IN ACCORDANCE WITH CMS 623.
- UNITS ARE IN U.S. SURVEY FEET

SETTING OF ALL MONUMENTS SHALL BE PERFORMED BY A SURVEYOR REGISTERED IN THE STATE OF OHIO. THE MONUMENT ASSEMBLIES AND REFERENCE MONUMENTS WILL BE INSTALLED BY THE CONTRACTOR AT THE TIME OF CONSTRUCTION. THE IRON PIN AND CAP (WHEN REQUIRED) ARE TO BE INSTALLED BY THE CONTRACTOR'S SURVEYOR.

CHANGES OR ALTERATIONS TO THE LOCATION OF ANY MONUMENTS SHOWN IN THIS TABLE, REQUIRE PRIOR APPROVAL FROM THE DISTRICT REAL ESTATE ADMINISTRATOR OF THE OHIO DEPARTMENT OF TRANSPORTATION. IN THE EVENT THAT CHANGES OR ALTERATIONS ARE APPROVED, A REVISED CENTERLINE PLAT WITH THE NEW LOCATIONS SHALL BE RECORDED IN THE APPLICABLE COUNTY RECORDS AND THE OHIO DEPARTMENT OF TRANSPORTATION. SPECIFICATIONS FOR MONUMENT ASSEMBLIES, REFERENCE MONUMENTS AND RIGHT OF WAY MONUMENTS ARE SHOWN ON STANDARD CONSTRUCTION DRAWING RM-1.1.

BASIS FOR BEARINGS:

ALL BEARINGS SHOWN ARE FOR PROJECT USE ONLY. BEARINGS ARE BASED ON THE OHIO STATE PLANE COORDINATE SYSTEM, NORTH ZONE NAD83 (2011).

STATIONING BASIS:
STATIONING IS BASED ON ODOT SLM, HOLDING INTERSECTION OF BOOKMEYER RD
SLM (1.51) = STA 79+72.80

SAN-510-0.83						BOUNDARY MONUMENTS				PID: 94332	
PROJECT COORDINATES (S.F. 1.00007238)										STATE PLANE GRID COORDINATES	
NAME	STATION	OFFSET (FT)	RT/LT	NORTH (FT)	EAST(FT)	ELEVATION(FT)	FEATURE	DESCRIPTION		NORTH (US FT)	EAST (US FT)
500	37+89.26	30.07	LT	601750.33	1838179.99		IPID			601706.77	1838046.96
501	39+92.67	29.99	LT	601953.74	1838181.64		IPID			601910.17	1838048.61
502	49+90.91	24.31	LT	602951.90	1838195.04		IPIPE			602908.26	1838062.00
503	53+25.60	29.98	RT	603286.15	1838251.93		IPID			603242.49	1838118.88
504	66+49.34	29.87	RT	604609.86	1838262.12		IPID			604566.10	1838129.08
505	68+55.76	30.09	LT	604816.74	1838203.77		IPIPE			604772.97	1838070.73
506	70+19.51	25.04	RT	604980.05	1838260.17		IPID			604936.27	1838127.13
507	72+21.95	30.82	LT	605182.92	1838205.89		IPIPE			605139.12	1838072.85
508	72+74.54	29.96	RT	605235.03	1838267.08		IPID			605191.23	1838134.03
509	74+04.19	29.62	LT	605365.15	1838208.51		IPIPE			605321.34	1838075.47
510	75+90.91	34.97	LT	605551.91	1838204.61		RSPK			605508.08	1838071.57
212	79+58.82	2652.40	LT	605940.17	1835590.12		RSPK			605896.32	1835457.27
211	80+42.37	5367.20	RT	605948.83	1843610.18		RSPK			605904.98	1843476.75
511	94+14.90	29.82	LT	607375.84	1838227.31		IPIN			607331.88	1838094.27
512	95+76.28	27.43	LT	607537.18	1838231.33		IPIN			607493.21	1838098.29
513	99+67.55	26.11	LT	607928.42	1838236.60		IPIN			607884.42	1838103.56
209	131+36.18	2648.07	LT	611142.38	1835665.40		MAG			611098.15	1835532.54
520	133+01.92	69.99	RT	611216.25	1838443.27		IPIN			611172.01	1838310.21
207	158+09.26	2626.28	LT	613787.82	1835835.34		IPIN			613743.40	1835702.47
208	159+90.91	2645.05	RT	613864.93	1841109.25		RSPK			613820.50	1840976.00
205	183+32.68	5238.27	LT	616387.96	1833282.06		RSPK			616343.35	1833149.38
206	185+83.47	1321.37	RT	616491.39	1839845.67		RSPK			616446.77	1839712.51
110	221+54.04	4036.50	LT	620173.74	1834561.72		RSPK			620128.86	1834428.94
111	228+85.88	1327.80	RT	620791.02	1839940.40		MAG			620746.09	1839807.23
204	290+42.32	2628.55	LT	627016.26	1836096.37		IPIN			626970.88	1835963.49
203	292+61.55	2663.99	RT	627141.75	1841392.06		MAG			627096.36	1841258.79
102	370+38.27	1469.62	LT	634991.12	1837398.96		MAG			634945.16	1837265.98

NOTE: THE EXISTING R/W WIDTH AND LOCATION WERE DETERMINED USING THE FOLLOWING DOCUMENTS:
1. SAN-510-2.50, PID 6955
2. OHIO TURNPIKE AND INFRASTRUCTURE COMMISSION, PLAT OF SURVEY, TREVOR A. BIXLER, PS (7730)
3. SANDUSKY COUNTY ROAD RECORDS
4. ODOT CL REFERENCES

I, ANTHONY A. GARCIA, P. S. have conducted a survey of the existing conditions for the Ohio Department of Transportation in JANUARY 2022. The results of that survey are contained herein. The horizontal coordinates expressed herein are based on the Ohio State Plane Coordinate System, NORTH Zone on NAD 83 (2011) datum. The Project Coordinates (US Survey feet) are relative to State Plane Grid Coordinates (US Survey feet) by a Project Adjustment Factor multiplier of 1.00007238. As a part of this project I have reestablished the locations of the existing property lines and centerline of existing Right of Way for property takes contained herein. All of my work contained herein was conducted in accordance with Ohio Administrative Code 4733-37 commonly known as "A Minimum Standards for Boundary Surveys in the State of Ohio" unless noted. The words I and my as used herein are to mean either myself or someone working under my direct supervision.

ANTHONY A. GARCIA, Professional Land Surveyor No. 8112,

Date:

RECEIVED _____, 20 ____
RECORDED _____, 20 ____
BOOK _____ PAGE _____
COUNTY RECORDER

CENTERLINE PLAT
SAN-510-0.83

DESIGN AGENCY



DESIGNER

JAS

REVIEWER

AAG

PROJECT ID

94332

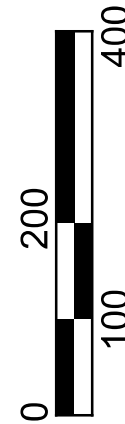
SHEET

1

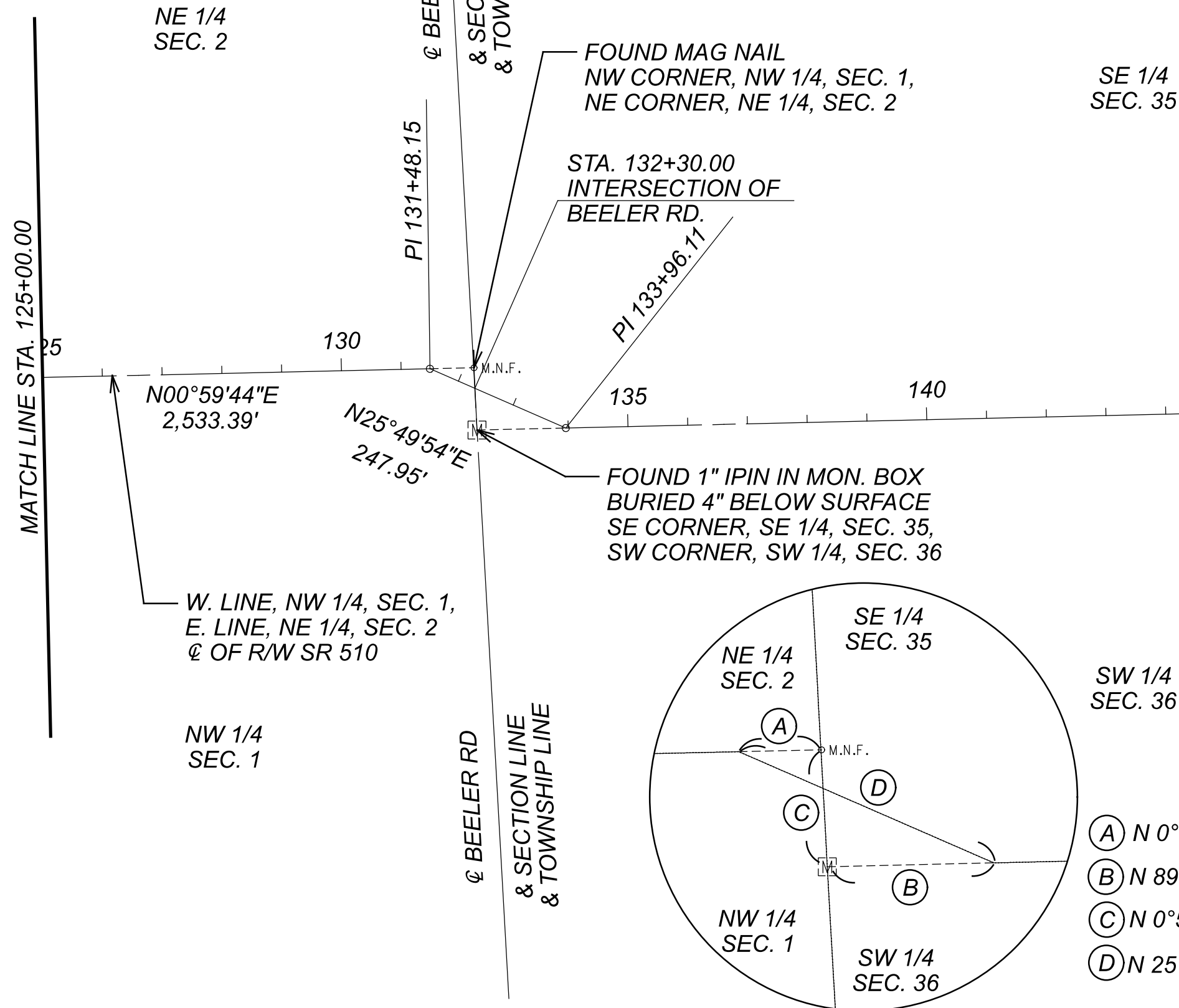
TOTAL

4

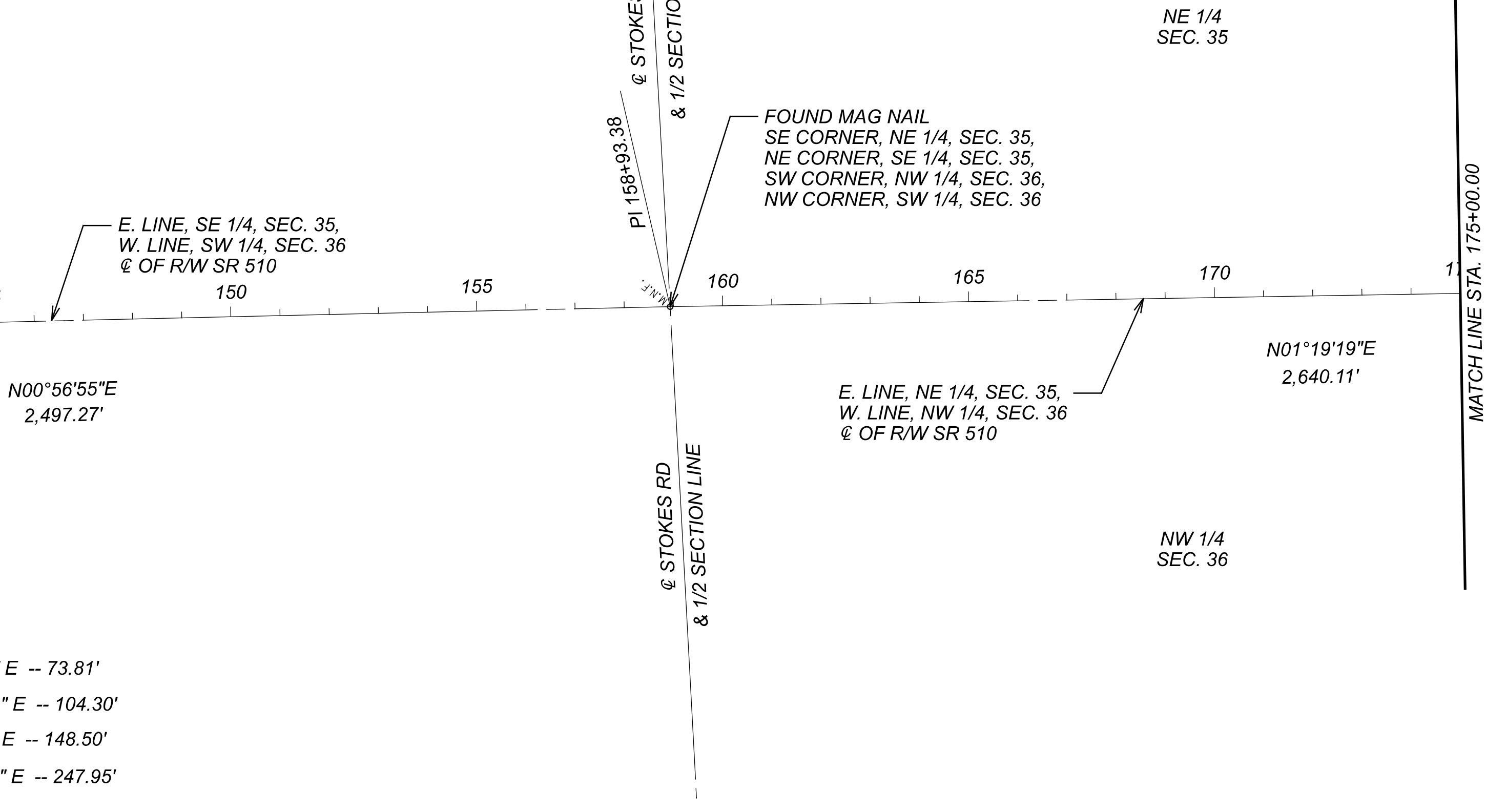
HORIZONTAL
SCALE IN FEET



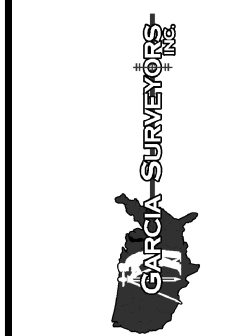
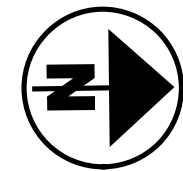
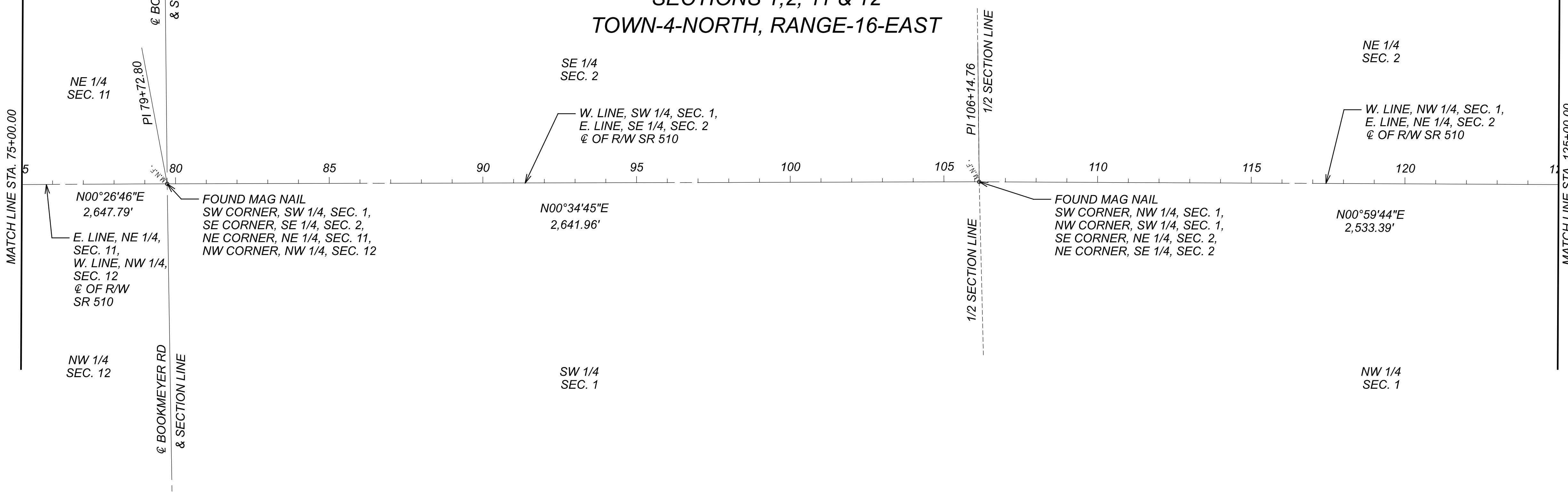
SANDUSKY COUNTY
GREEN CREEK TOWNSHIP
SECTIONS 1 & 2
TOWN-4-NORTH, RANGE-16-EAST

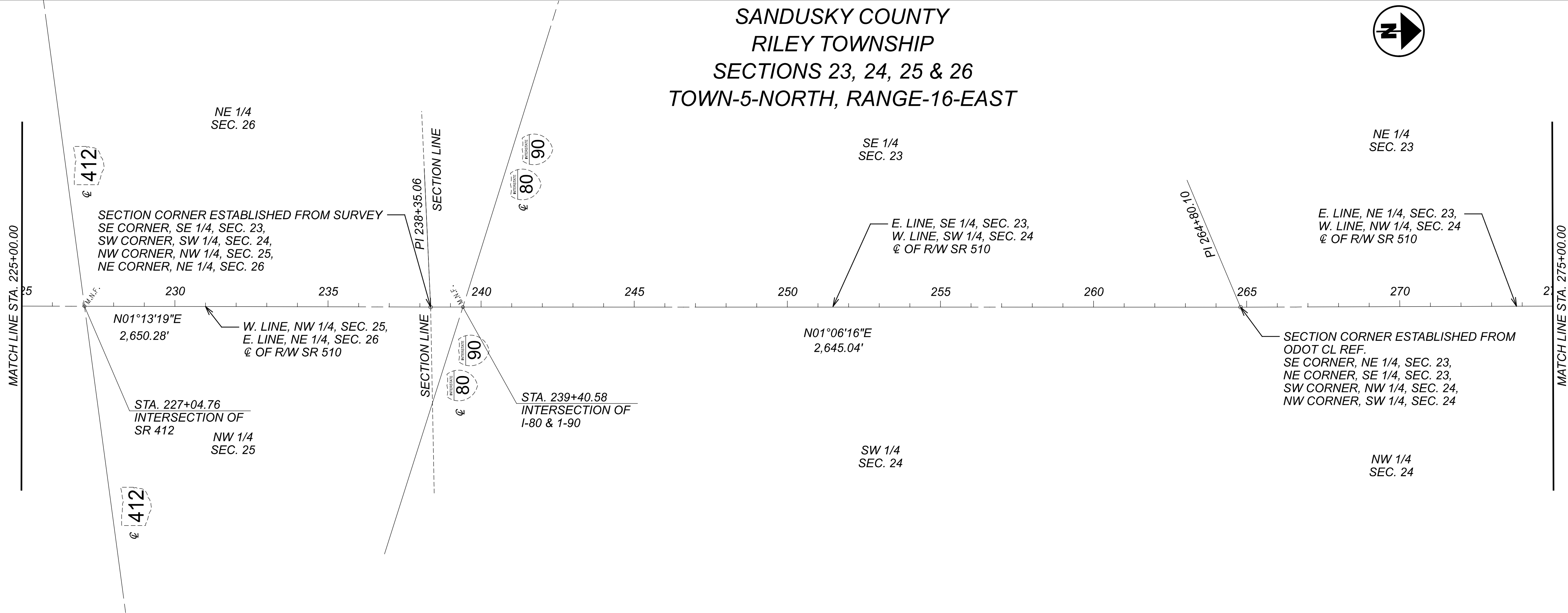
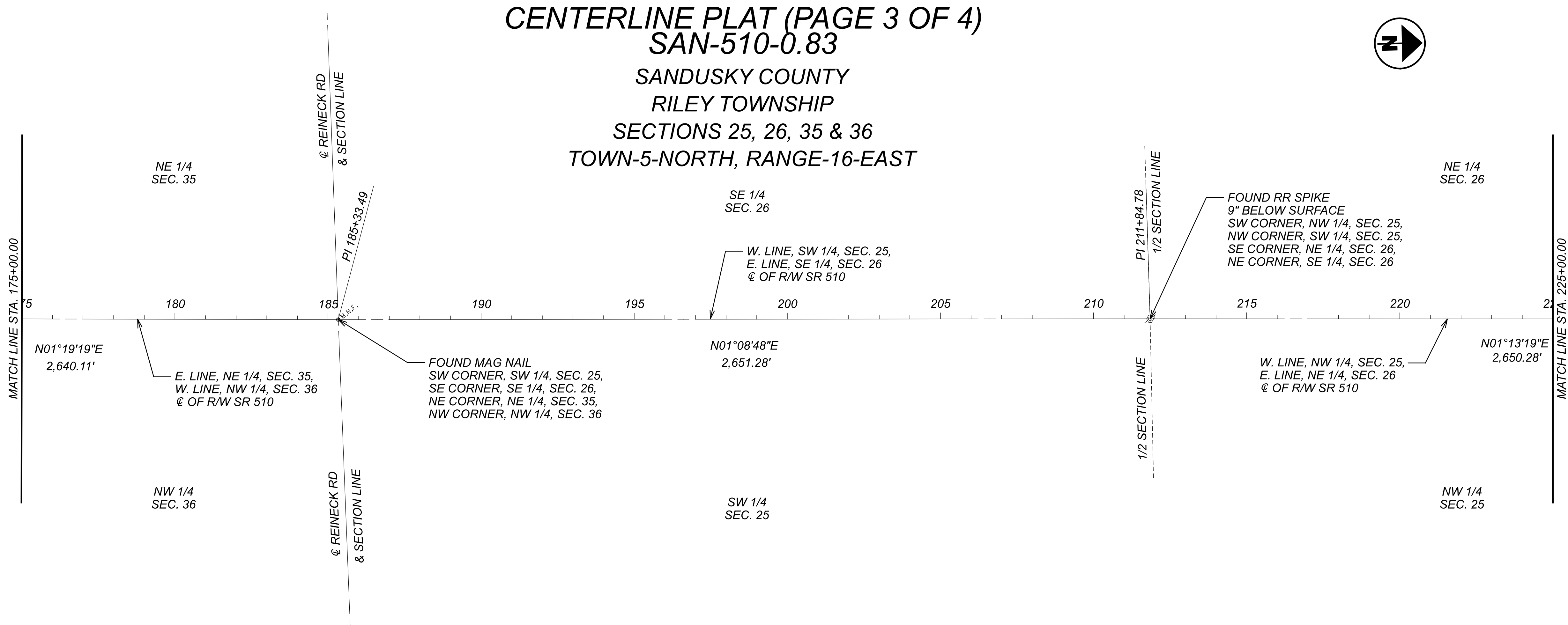


SANDUSKY COUNTY
RILEY TOWNSHIP
SECTIONS 35 & 36
TOWN-5-NORTH, RANGE-16-EAST



CENTERLINE PLAT (PAGE 2 OF 4)
SAN-510-0.83
SANDUSKY COUNTY
GREEN CREEK TOWNSHIP
SECTIONS 1,2, 11 & 12
TOWN-4-NORTH, RANGE-16-EAST





HORIZONTAL
SCALE IN FEET

0

100

200

400

CENTERLINE PLAT

SAN-510-0.83

DESIGN AGENCY

DESIGNER

JAS

REVIEWER

AAG

PROJECT ID

94332

SHEET

3

TOTAL

4

